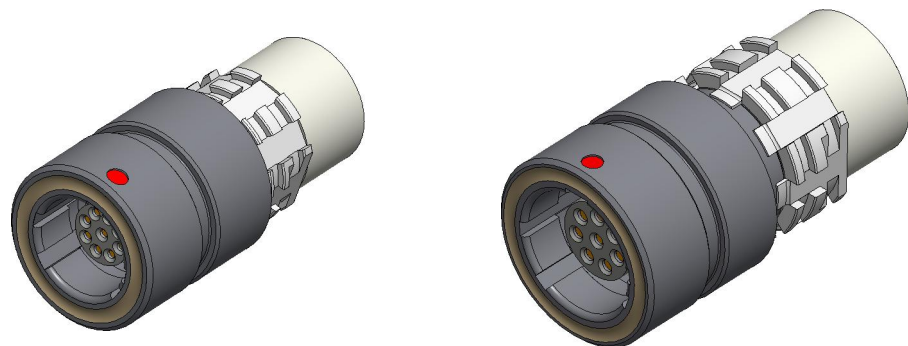


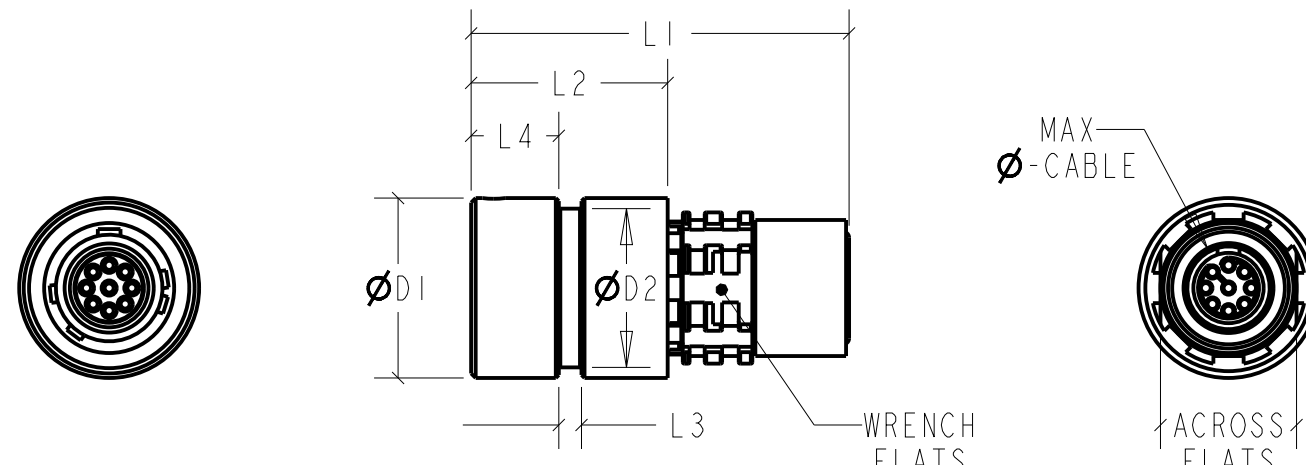
NEXUS RANGER IN-LINE BREAK-AWAY JACK



SIZE 0

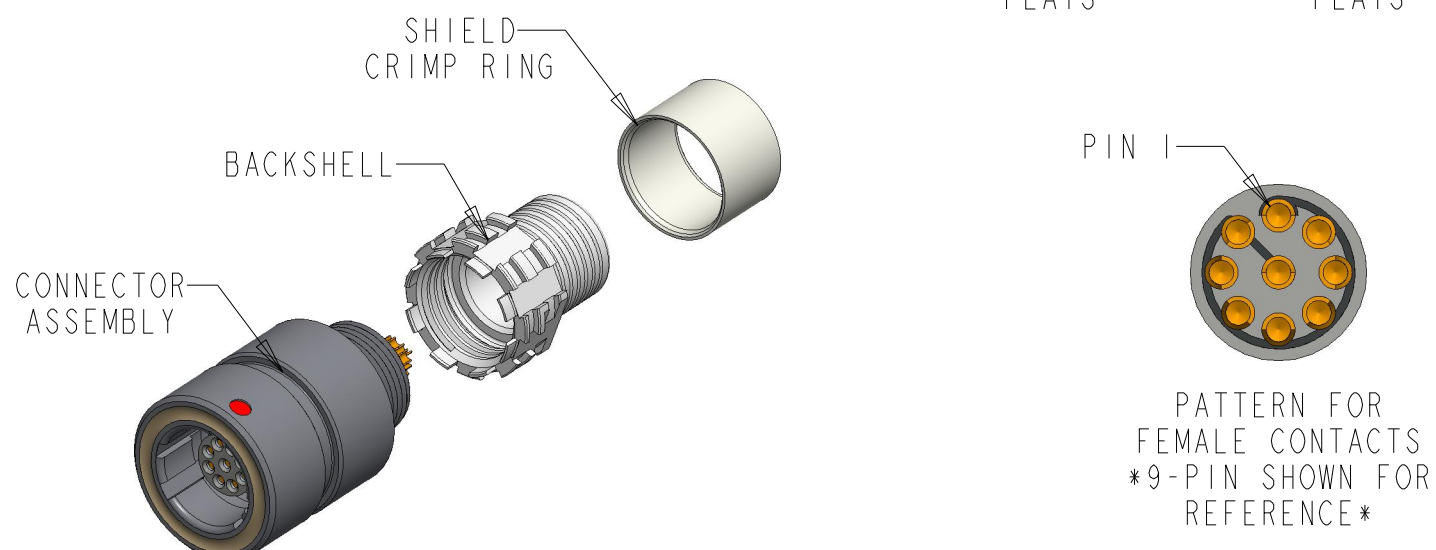
SIZE 1

SIZE	L1	L2	L3	L4	ØD1	ØD2	AF-A	MAX Ø CABLE
0	.98" [25,0]	.51" [13,0]	.06" [1,5]	.23" [5,8]	.47" [11,9]	.41" [10,5]	.35" [9,0]	.21" [5,5]
1	1.06" [27,0]	.48" [12,1]	.06" [1,5]	.23" [5,8]	.53" [13,9]	.49" [12,5]	.43" [11,0]	.25" [6,5]



SPECIFICATIONS

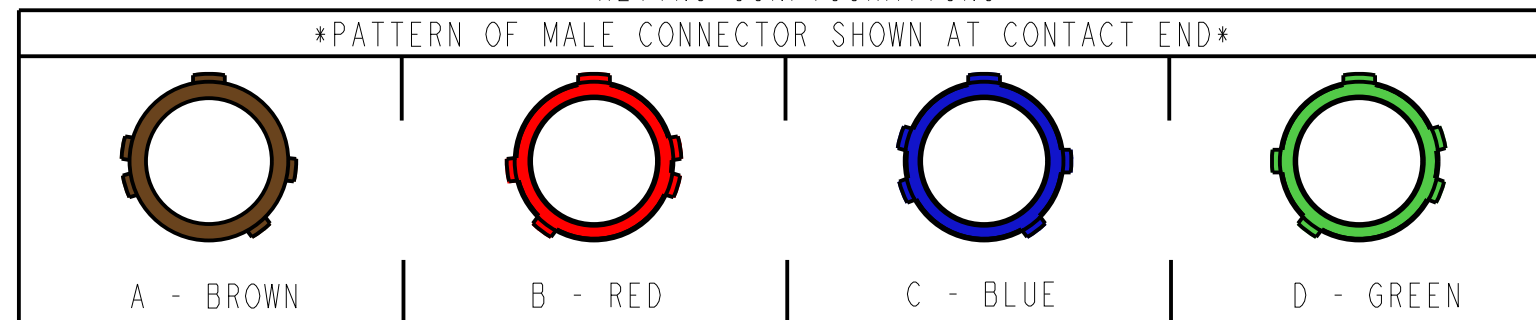
INGRESS RATING	IP68/1m IP69k WHEN MATED
OPERATING TEMPERATURE	-51°C TO 125°C
CORROSION RESISTANCE	96Hr SALT FOG
MECHANICAL ENDURANCE	5,000 MATING CYCLES
CONTACT RESISTANCE	PIN TO PIN - <5mΩ
	SHELL TO SHELL - <5mΩ
INSULATION RESISTANCE	>100MΩ
SHIELDING EFFECTIVENESS	>65dB
CONTACT MATERIAL	GOLD PLATED BRASS ALLOY



NOTES:

1. IN-LINE CONNECTOR IS DESIGNED TO BE ENCAPSULATED
2. BREAK-AWAY NON-LOCKING MATING
3. STANDARD PLATING IS CONDUCTIVE RUTHENIUM
4. SHIELD TERMINATED UNDER CRIMP BAND
CRIMP EFFECTIVENESS DETERMINED BY TESTING TO ENSURE SHIELD TO SHELL CONTACT RESISTANCE IS ACHIEVED
5. THREAD LOCKER IS REQUIRED FOR ASSEMBLY
6. KEYING MUST MATCH MATING CONNECTOR

KEYING CONFIGURATIONS



THIS DOCUMENT CONTAINS PROPRIETARY INFORMATION OF NEXUS, INCORPORATED AND SUCH INFORMATION MAY NOT BE DISCLOSED TO OTHERS FOR ANY PURPOSE OR USED FOR ANY PURPOSE WITHOUT THE WRITTEN CONSENT OF NEXUS.

				DWN. BY BAM	DATE 10/05/2023	MATERIAL			
				CHECKED BY	DATE	FINISH			
				APPR. BY	DATE	WEIGHT		SCALE = 2:1	
				UNLESS OTHERWISE SPECIFIED: DIMENSIONS ARE IN INCHES &/OR [mm] TOLERANCES:		TITLE		NEXUS STAMFORD, CONN	
A	NEW RELEASE		10/05/2023	DECIMAL	.XX[X,X]	RANGER BREAKAWAY INLINE JACK		SIZE B	DWG. NO. NX-KIX
LET.	REVISION	CN #	DATE	FRACTION	± X/XX"	DO NOT SCALE DWG.		SHEET 1 OF 1	
				ANGLES	± X				