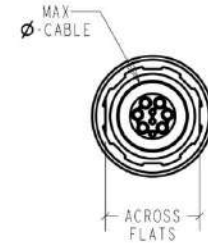
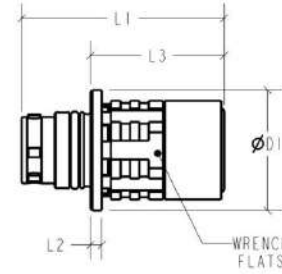


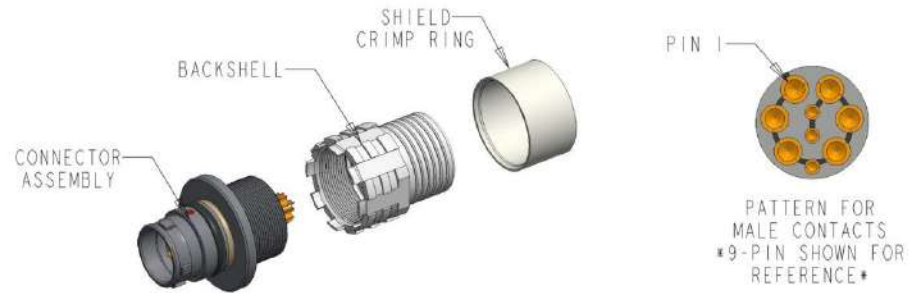
HIGH DENSITY NEXUS RANGER IN-LINE BREAK-AWAY PLUG



SIZE	L1	L2	L3	ØD1	AF-A	MAX Ø CABLE
0	.85" [21,5]	.05" [1,2]	.56" [14,2]	.50" [12,8]	.39" [10]	.27" [7]
1	1.15" [29,2]	.05" [1,2]	.72" [18,2]	.58" [14,8]	.47" [12]	.33" [8,5]



SPECIFICATIONS	
INGRESS RATING	IP68/1m IP69k WHEN MATED
OPERATING TEMPERATURE	-51°C TO 125°C
CORROSION RESISTANCE	96Hr SALT FOG
MECHANICAL ENDURANCE	5,000 MATING CYCLES
CONTACT RESISTANCE	PIN TO PIN - <10mOhm SHELL TO SHELL - <5mOhm
INSULATION RESISTANCE	>100MOhm
SHIELDING EFFECTIVENESS	>65dB
CONTACT MATERIAL	GOLD PLATED BRASS ALLOY



NOTES:

1. IN-LINE CONNECTOR IS DESIGNED TO BE ENCAPSULATED
2. BREAK-AWAY NON-LOCKING MATING
3. STANDARD PLATING IS CONDUCTIVE RUTHENIUM
4. SHIELD TERMINATED UNDER CRIMP BAND
CRIMP EFFECTIVENESS DETERMINED BY TESTING TO ENSURE SHIELD TO SHELL CONTACT RESISTANCE IS ACHIEVED
5. THREAD LOCKER IS REQUIRED FOR ASSEMBLY
6. KEYING MUST MATCH MATING CONNECTOR

KEYING CONFIGURATIONS

PATTERN OF MALE CONNECTOR SHOWN AT CONTACT END			
A - BROWN	B - RED	C - BLUE	D - GREEN



THIS DOCUMENT CONTAINS PROPRIETARY INFORMATION OF NEXUS, INCORPORATED AND SUCH INFORMATION MAY NOT BE DISCLOSED TO OTHERS FOR ANY PURPOSE OR USED FOR ANY PURPOSE WITHOUT THE WRITTEN CONSENT OF NEXUS.

					DWN. BY BAM	DATE 10/04/2023	MATERIAL	
					CHECKED BY	DATE	FINISH	
					APPR. BY	DATE	WEIGHT	
					UNLESS OTHERWISE SPECIFIED: DIMENSIONS ARE IN INCHES &/OR (mm) TOLERANCES:		SCALE = 2:1	
A	NEW RELEASE	----	10/4/2023		DECIMAL	.XX(X),XX	TITLE HIGH DENSITY RANGER BREAKAWAY IN-LINE PLUG	
LET.	REVISION	CN #	DATE	CHK	FRACTION	± X/XX"		
					ANGLES	± °	DO NOT SCALE DWG. SHEET 1 OF 2	
							NEXUS STAMFORD, CONN	
							SIZE B	DWG. NO. NX-A1XW

PART NUMBER	SIZE	KEY	No. OF CONTACTS	CONTACT TYPE	CONTACT ϕ (mm)	WIRE GAUGE AWG
NX-A10WAM-P09XMM0-0000	0	A - BROWN	09	SOLDER CUP	3x0,3mm 6x0,7mm	28 22
NX-A10WAM-P12XMM0-0000	0	A - BROWN	12	SOLDER CUP	10x0,3mm 2x0,7mm	28 22
NX-A10WAM-P16XBC0-0000	0	A - BROWN	16	SOLDER CUP	0,3mm	28
NX-A11WAM-P27XBC0-0000	1	A - BROWN	27	SOLDER CUP	0,3mm	28

CUI

THIS DOCUMENT CONTAINS PROPRIETARY INFORMATION OF NEXUS, INCORPORATED AND SUCH INFORMATION MAY NOT BE DISCLOSED TO OTHERS FOR ANY PURPOSE OR USED FOR ANY PURPOSE WITHOUT THE WRITTEN CONSENT OF NEXUS.

DWN. BY BAM	DATE 10/04/2023	MATERIAL	
CHECKED BY	DATE	FINISH	
APPR. BY	DATE	WEIGHT	SCALE =
UNLESS OTHERWISE SPECIFIED: DIMENSIONS ARE IN INCHES &/OR (mm) TOLERANCES:		TITLE	
DECIMAL	.XX(X,XX) .XXX(X,XXX)	HIGH DENSITY RANGER BREAKAWAY INLINE PLUG	
FRACTION	\pm X/XX"	DO NOT SCALE DWG.	SHEET 2 OF 2
ANGLES	\pm X°		
		SIZE B	DWG. NO. NX-A1XW

NEXUS
STAMFORD, CONN